

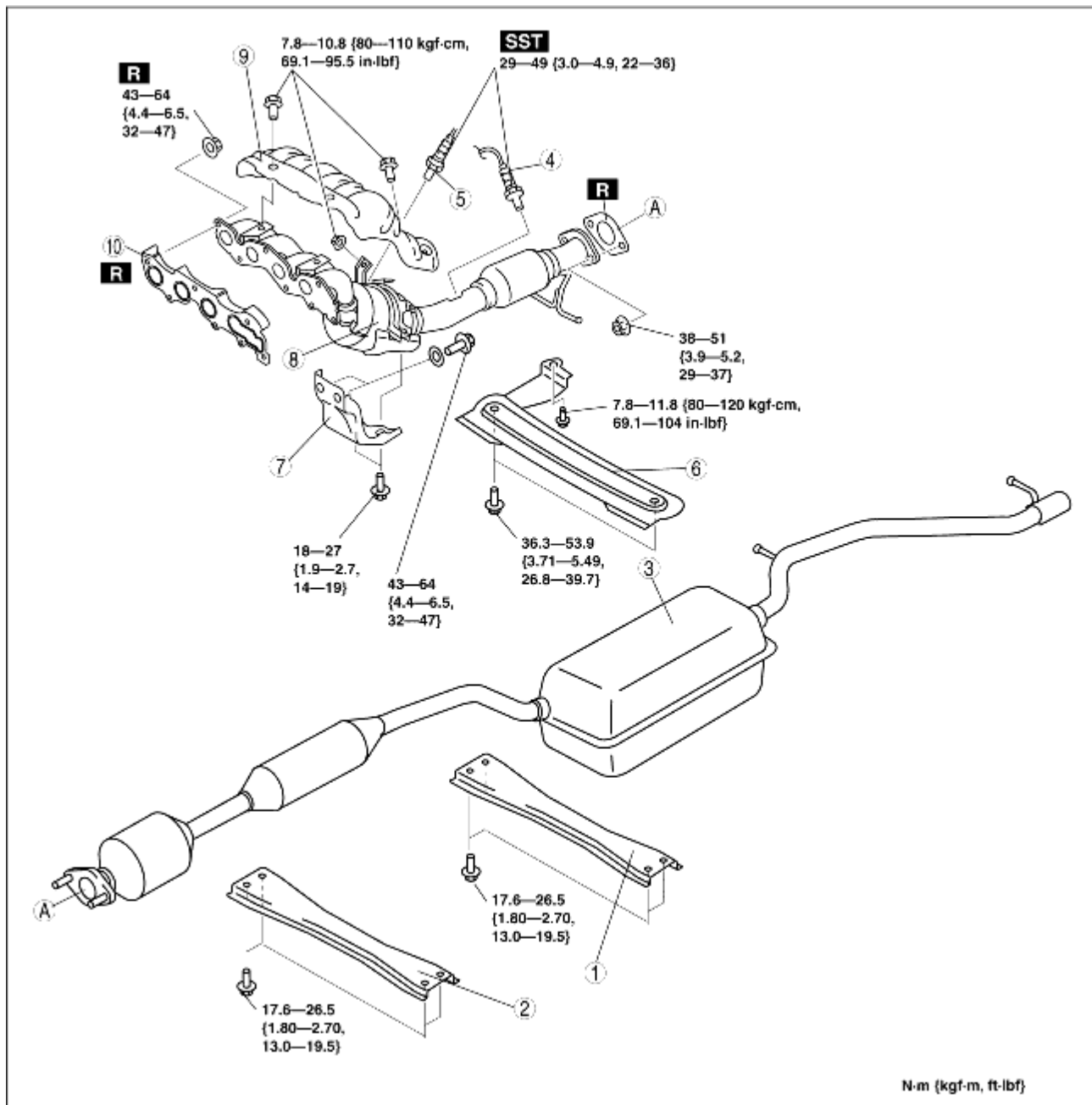
EXHAUST SYSTEM REMOVAL/INSTALLATION [LF]

B3E011500115W04

Warning

- A hot engine and exhaust system can cause severe burns. Turn off the engine and wait until they are cool before removing the exhaust system.

1. Remove the plug hole plate. (See [PLUG HOLE PLATE REMOVAL/INSTALLATION \[LF\]](#).)
2. Remove the battery cover and battery duct. (See [BATTERY REMOVAL/INSTALLATION \[LF\]](#).)
3. Disconnect the negative battery cable.
4. Remove the under cover.
5. Remove in the order indicated in the table.
6. Install in the reverse order of removal.



B3E0115W101

| | |
|---|-------------------------------------------------------------------------------------------------------------------------------|
| 1 | Rear tunnel member |
| 2 | Front tunnel member |
| 3 | Main silencer (See Main Silencer Removal Note.) |
| 4 | Rear heated oxygen sensor (See HEATED OXYGEN SENSOR (HO2S) REMOVAL/INSTALLATION [LF].) |
| 5 | Front heated oxygen sensor (See HEATED OXYGEN SENSOR (HO2S) REMOVAL/INSTALLATION [LF].) |
| 6 | Member |
| 7 | Exhaust manifold bracket |
| 8 | WU-TWC (See Exhaust Manifold Removal Note.) (See Exhaust Manifold Installation Note.) |

| | |
|----|----------------------------|
| 9 | Exhaust manifold insulator |
| 10 | Exhaust manifold gasket |

Main Silencer Removal Note

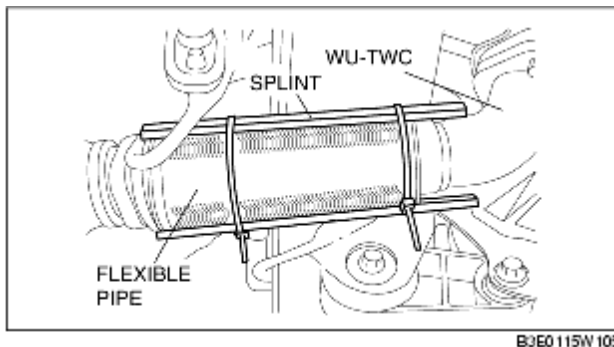
1. Loosen the lower shock absorber bolt and rear crossmember component installation bolt, and lower the rear crossmember component **approx. 70 mm {2.8 in}**. (See [REAR CROSSMEMBER REMOVAL/INSTALLATION](#).)

Exhaust Manifold Removal Note

Caution

- Over bending of the exhaust flexible pipe may cause damage resulting in failure.

1. Remove the front wheels and tires.
2. Disconnect the steering shaft from the steering gear and linkage side. (See [STEERING GEAR AND LINKAGE REMOVAL/INSTALLATION](#).)
3. Remove the No.1 engine mount rubber. (See [ENGINE REMOVAL/INSTALLATION \[LF\]](#).)
4. Loosen the exhaust manifold bolts.
5. Remove the installation bolts of the front stabilizer and front crossmember component. (See [FRONT CROSSMEMBER REMOVAL/INSTALLATION](#).)
6. Loosen the front crossmember component installation bolts and lower the front crossmember component **approx. 100 mm {3.94 in}**. (See [FRONT CROSSMEMBER REMOVAL/INSTALLATION](#).)
7. Support the flexible pipe with a support wrap or splint as shown in the figure.



8. Remove the exhaust manifold by lowering it to the underside of the vehicle.

Exhaust Manifold Installation Note

1. Tighten the exhaust manifold installation nuts in the order shown in the figure.

